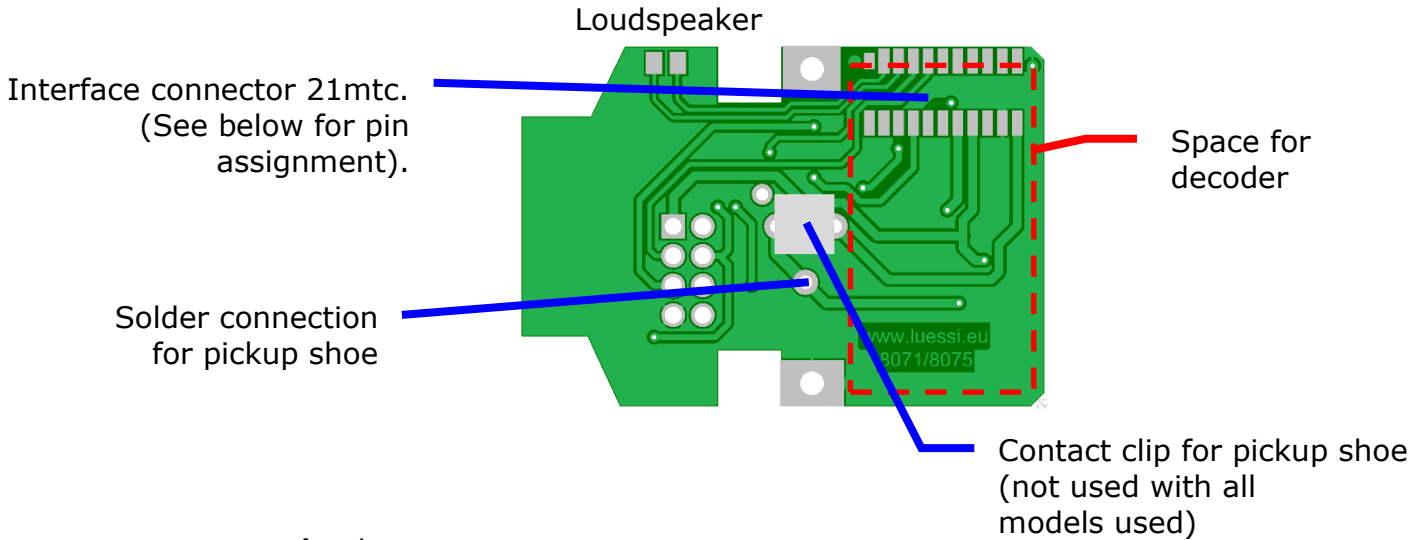


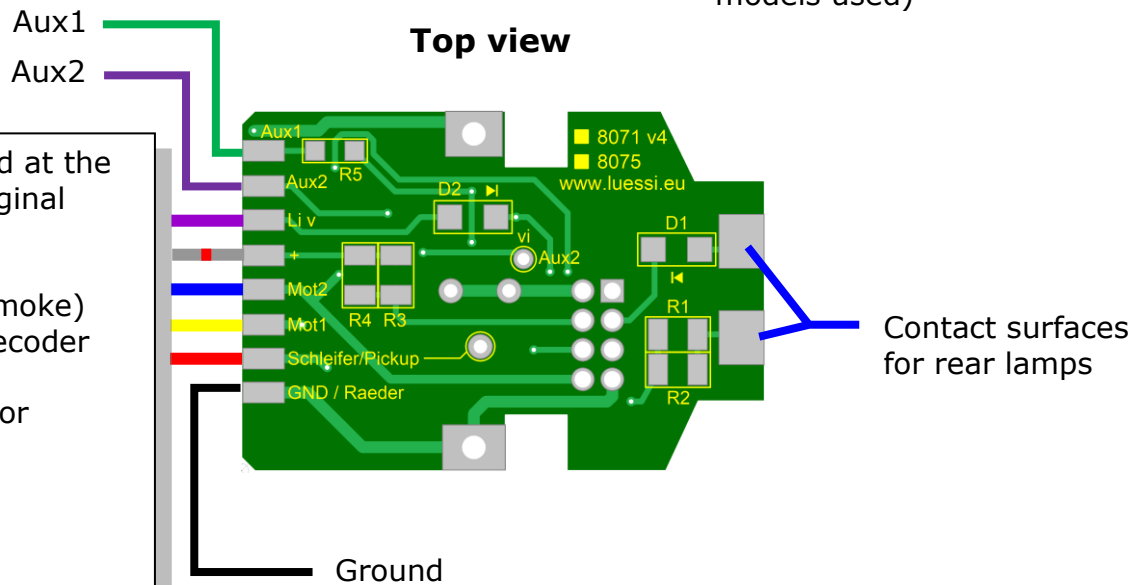
PCB for decoder installation in Märklin class C/K, item 8071mtc/8075mtc

The printed circuit board 8071mtc/8075mtc was developed especially for Märklin locomotives class C and class K to upgrade them with current decoder with minimal effort. This can also be a sound decoder (note the size!).

Bottom View



Top view



The wires are soldered at the same place as the original decoder.

Here is:

- Aux1 over R5 (0Ω, smoke)
- Aux2 directly from decoder
- Li v Front lights
- gr Return conductor (Dec+)
- bl Motor 2
- yw Motor 1
- rd Ground

So the colours in the locomotive do not follow any standard here!

Pin assignment 21mtc interface:

NEM / DCC standard

Hall sensor 1	1	22	Red	Pickup, Pantograph
Hall sensor 2	2	21	Black	Wheels, Ground
Aux 6 (L)	3	20		DC (-) Functions
Aux 4 (L)	4	19	Orange	Motor +
Train bus Clock	5	18	Grey	Motor -
Train bus Data	6	17		Aux 5 (L) / Motor (3)
Rear light	7	16	Blue	DC (+) Functions
Front light	8	15	Green	Aux. 1
Loudspeaker 2	9	14	Purple	Aux. 2
Loudspeaker 1	10	13		Aux. 3 (L)
Index pin	⊗	12		Vcc +5V Processor